



## Wood-fire Oven

Combination Cook Stove / Heater

N550

Powerful heat output  
with stylish good looks.



With its robust oven and stove top cooking features, the wood-fire oven is perfect for remote locations or anywhere wood is the preferred fuel source. Enjoy the ability to cook a roast, pizza or breads, plus enjoy the added benefit of primary heating in spacious living areas.



# Wood-fire Oven Combination Cook Stove / Heater

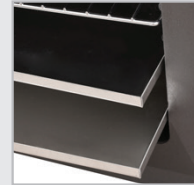
N550



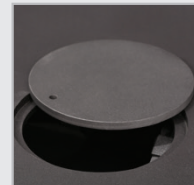
## N550

Dimensions (WxHxD) . . . . .	26-5/8" x 33" x 21-1/4"
. . . . .	67.5 cm x 83.8 cm x 54.0 cm
Heat Output . . . . .	65,000 BTU's/hr
Residual Heat Output . . . . .	2,000-2,500 sq. ft. (185 to 232 m <sup>2</sup> )
Weight . . . . .	465 lbs (210.9 Kg)
Construction . . . . .	Steel 1/4" & 5/16"
Stove racks . . . . .	2
Maximum Log . . . . .	19" (48.3 cm)
Firebox Volume . . . . .	1.55 cu.ft (0,044 m <sup>3</sup> )
Top Flue Size . . . . .	6" (15.2 cm)
Efficiency Rating . . . . .	78%
5" (12.7 cm) Cook rings . . . . .	2

## Features



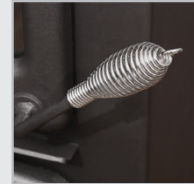
Supplied with 2 wire cooking racks



Cook Top: Direct radiant heat 1/4" top plate has 2 removable cook rings



Oven temperatures supplied with both a °F and °C thermometer



"Stay Cool" spring handle



The adjustable bypass allows for greater fire and oven temperature control by increasing/ decreasing the amount of air into the firebox



With the flue bypass dampener closed, flue gases spill over the internal side plates of the firebox creating a convection cooking effect



Cast iron doors and ceramic glass

Model #	Description	UPC	Heat Output	Residual Heat Output	Weight	Warranty <sup>1</sup>	Product Dimensions (WxHxD)	
							Inches	cm
N550	Wood-fire Oven	781052124554	65,000 BTU's/hr	2,000-2,500 sq. ft.	465 lbs (210.9 Kg)	10 year limited	26-5/8 x 33 x 19-5/8	67.6 x 83.8 x 49.7
N350	Wood-fire Oven	781052124547	30,000 BTU's/hr	750-1,000 sq. ft.	265 lbs (120.2 Kg)	10 year limited	21-5/8 x 34 x 21	54.9 x 86.4 x 53.3

Specifications are subject to change. ©2022 Glen Dimplex Americas. <sup>1</sup>Limited warranty.

SE-571-R03-081122

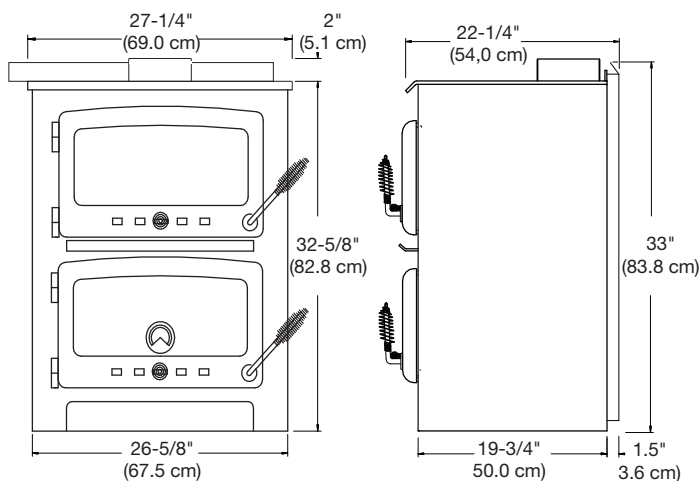


# Wood-Fire Oven

Wood-fire oven combined with wood-fire heating

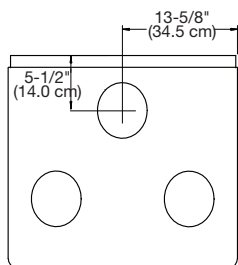
N550

## N550 Dimensions

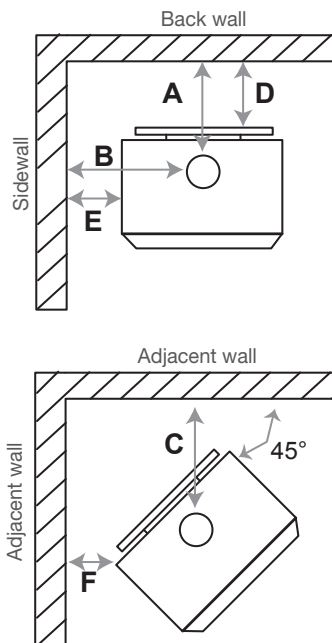


## Internal Dimensions

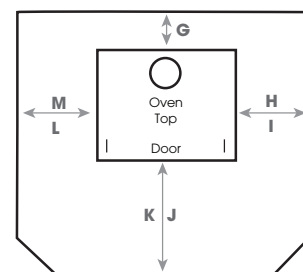
Firebox	Oven
18.7" (47.5 cm)	19" (48.3 cm)
11.4" (29.0 cm)	12.6" (32.0 cm)
11.8" (30.0 cm)	10" (25.4 cm)



## Clearance



## Non-combustible floor protector requirements



<b>G</b> = 8"	(20.3 cm)	Canada
<b>G</b> = 0"	(0.0 cm)	USA
<b>H</b> = 8"	(20.3 cm)	Canada
<b>I</b> = 5"	(12.7 cm)	USA
<b>J</b> = 18"	(45.0 cm)	Canada
<b>K</b> = 16"	(40.6 cm)	USA
<b>L</b> = 5"	(12.7 cm)	USA
<b>M</b> = 8"	(20.3 cm)	Canada

## Residential installation for Standard Clearances

Installation	Measurement to:	N550		
			Single Wall	Double Wall
Standard	Back Wall to Flue Pipe	<b>A</b>	12.5" (31.8 cm)	N/A
	Side Wall to Flue Pipe	<b>B</b>	22.5" (57.2 cm)	
	Back Wall to Appliance	<b>D</b>	10.0" (25.4 cm)	
	Side Wall to Appliance	<b>E</b>	12.0" (30.5 cm)	
Corner	Wall to Flue Pipe	<b>C</b>	15.0" (38.1 cm)	
	Wall to Appliance	<b>F</b>	5" (12.7 cm)	
Ceiling to Appliance Top			51.0" (129.6 cm)	

EPA Cookstove Requirements	N550
(1) Oven volume > 1 ft <sup>3</sup> (0,03 m <sup>3</sup> )	1,69 ft <sup>3</sup> (0,48 m <sup>3</sup> ) with oven rack
(2) Oven thermometer	<input checked="" type="checkbox"/>
(3) Flame path around oven	<input checked="" type="checkbox"/>
(4) Ash pan	Ash collection beneath oven
(5) Ash clean out beneath oven	Access ash pan through base of oven
(6) No fan or heat channels	<input checked="" type="checkbox"/>
(7) Cooking surface 1.5 times greater than firebox volume	Cooking surface = 3.4 ft <sup>3</sup> (0,096 m <sup>3</sup> ) Firebox Volume = 1.55 ft <sup>3</sup> (0,044 m <sup>3</sup> )
(8) At least four sides of oven exposed to flame path	Flame path wraps sides, base, and rear of oven